



Heathfield Court, London, W4 4LR

Guide Price £550,000

**WHITMAN & CO.**

SALES · LETTINGS · COMMERCIAL

- Lovely central Chiswick location
- Fifth floor with commanding views
- Includes heating and hot water
- Great for transport links
- Spacious reception room
- No onward chain

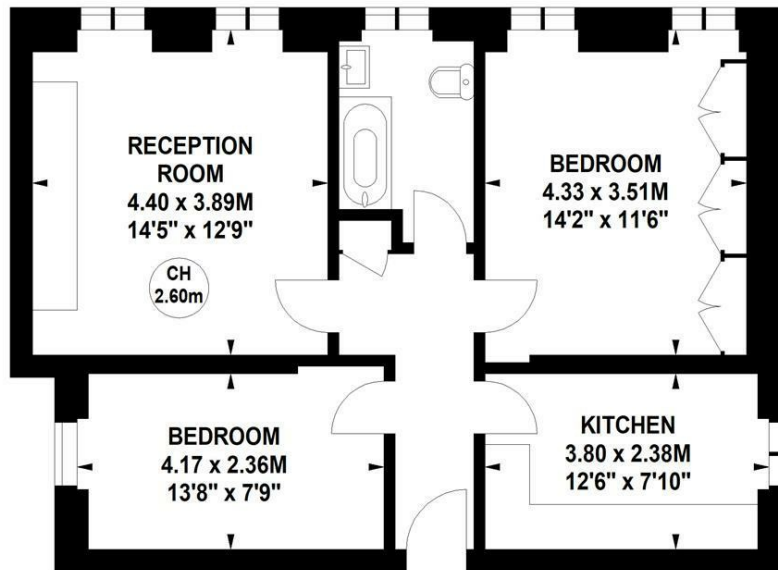
Tenure - Leasehold + share of freehold  
 Lease Length - 989 Years remaining  
 Ground Rent - Peppercorn  
 Service Charge - £7505 pa  
 Local Authority - Hounslow  
 Council Tax - Band D

## Heathfield Court, Heathfield Terrace, W4

Approximate gross internal area

63.73 sq m / 686 sq ft

Key :  
 CH - Ceiling Height



### Fifth Floor

Not to scale, for guidance only and must not be relied upon as a statement of fact.  
 All measurements and areas are approximate only

## THE PROPERTY

An exceptionally light triple aspect top-floor apartment with delightful views across Turnham Green and beyond, situated within one of Chiswick's most prestigious and well-maintained private developments, moments from Chiswick High Road and its extensive shopping facilities, numerous restaurants and bars. The accommodation comprises a 14'5" reception room with fitted shelving and lovely views over the green, a main double bedroom with fitted wardrobes and views over the green, a second double bedroom, a fitted kitchen/breakfast room, bathroom, entrance hall with storage, lift access, gated off street parking (unallocated) and porter. Please note, the heating and hot water are included in the service charge. Local transport links include both Chiswick Park and Turnham Green tube stations, as well as various local bus routes and convenient vehicular access via the A4/M4 to central London and Heathrow. No onward chain.

## SITUATION



5-7 Turnham Green Terrace, Chiswick, London, W4 1RG

Tel 020 8747 8800

E-mail [sales@whitmanandco.com](mailto:sales@whitmanandco.com)

Website [www.whitmanandco.com](http://www.whitmanandco.com)

